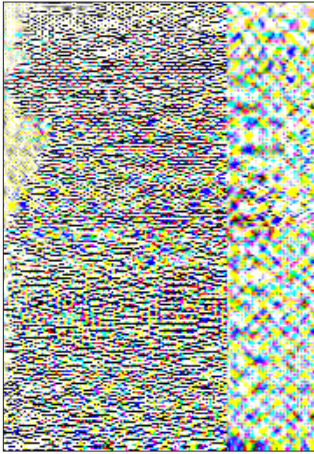


RHVC



MVA

MVA



CCS



CNAS

BV

CE

RHVC-

RHVC
KV/ HI

RHVC

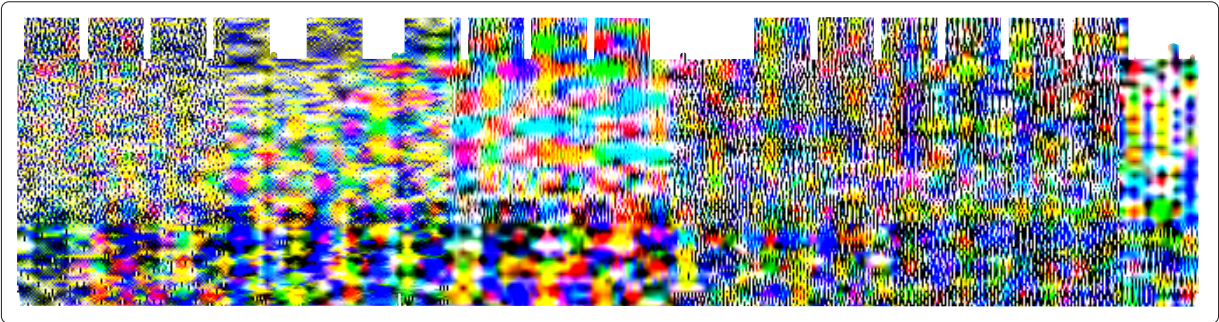
PWM

V/ HI KV/ HI KV/ HI V/ HI . KV/ HI

IGBT

RHVC-

- 可提供采用两电平或三电平拓扑结构的低压交流变频电源产品
-



/



/



	GB/T
	GB/T
	IEC/ISO/IEEE
	IEC/ISO/IEEE
	IEC/ISO/IEEE
	JTS
	JT/T
	JT/T
	IEC
EMC	IEC
	GB/T
	GB/T
	GB
	GB/T



SCT

kV/ HI
. kV/ HI V/ HI
kVA

CCS



SCT

kV/ HI
. kV/ HI kV/ HI
kVA



RHVC

EPC

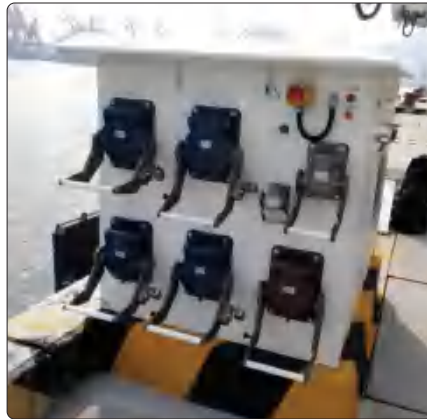
. kV/ HI
. kV/ HI kV/ HI
kVA

GT

. kV/ kV/ HI

kVA

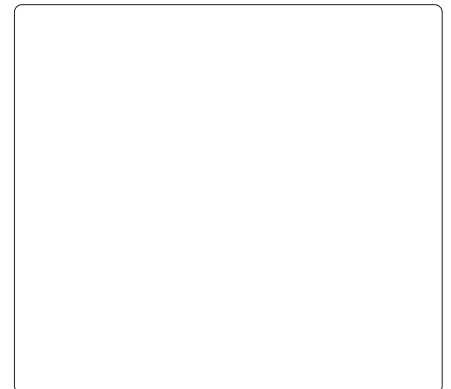
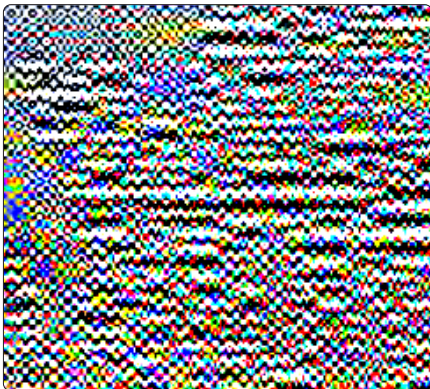
kV/ HI
HI



. kV/ HI
. kV/ HI kV/ HI
kVA

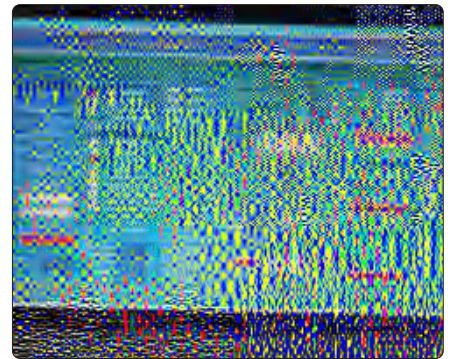
MVA

. kV@ HI / kV@ HI



kV/ HI
 . kV/ HI kV/ HI
 kVA

kV/ HI . kV/ HI kV/ HI



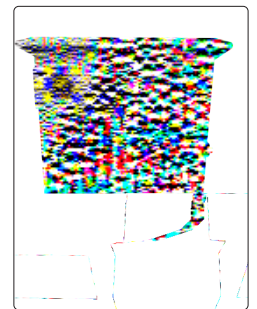
* MVA

EPC

kV/ HI
 . kV/ HI kV/ HI
 kVA

MVA

kV



RHVC

kV/ HI
 . kV/ HI kV/ HI
 kVA

kVA

kW h

MVA

MVA

AC V/ HI
 MW/



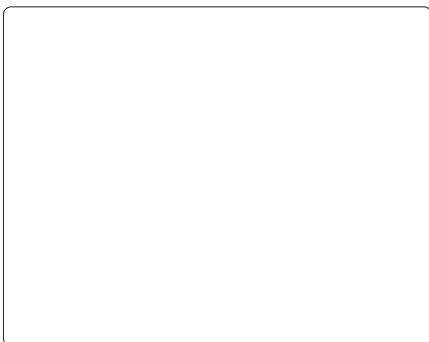
kV/ HI
 V- V/ HI HI
 kVA

kV/ HI

V/ HI / HI V/ HI
 V V V / HI

V/ HI ()
 . MVA

V / HI



Bayport

kV/ HI

. kV/ HI

kVA/ kVA

kV

-

kV

. kV

. kV

MVA/ MVA



kV/ HI

DC V

kW

DC V

kV/ HI



